


The dynamic efficiency is **0.92** for all ratios

Input speed (n_1) = 1400 min⁻¹

Output speed n_2 [min ⁻¹]	Ratio i	Motor power P_{1M} [kW]	Output torque M_{2M} [Nm]	Service factor $f.s$	Nominal power P_{1R} [kW]	Nominal torque M_{2R} [Nm]	B5 motor flanges				B14 motor flanges			Output shaft 	Ratio code
							-	-	-	-	-Q	-R	-T		
18.7	74.79	1.5	704	1.0	1.4	675	-	-	-	-	C	C		19132418	01
16.3	85.99	1.1	591	1.1	1.3	675	-	-	-	-	C	C		19132416	02
14.0	99.66	1.1	685	1.0	1.1	675	-	-	-	-	C	C		17132416	03
12.0	116.35	0.75	548	1.2	0.92	675	-	-	-	-	C	C		17132414	04
11.5	121.45	0.75	572	1.2	0.89	675	-	-	-	-	C	C		13132418	05
10.0	139.64	0.75	658	1.0	0.77	675	-	-	-	-	C	C		13132416	06
9.2	152.21	0.75	717	0.9	0.71	675	-	-	-	-	C	C		19082416	07
8.6	163.02	0.55	567	1.2	0.66	675	-	-	-	-	C	C		13132414	08
7.9	177.69	0.55	618	1.1	0.61	675	-	-	-	-	C	C		19082414	09
6.8	205.95	0.55	716	0.9	0.52	675	-	-	-	-	C	C	Standard ø35	17082414	10
6.3	222.52	0.55	774	0.9	0.48	675	-	-	-	-	C	C		10132414	11
5.6	248.76	0.37	578	1.2	0.43	675	-	-	-	-	C	C		9132416	12
4.8	290.41	0.37	675	1.0	0.37	675	-	-	-	-	C	C		9132414	13
4.1	337.39	0.37	784	0.9	0.32	675	-	-	-	-	C	C		10082416	14
3.6	393.88	0.25	618	1.1	0.27	675	-	-	-	-	C	C		10082414	15
3.2	440.33	0.25	690	1.0	0.24	675	-	-	-	-	C	C		9082416	16
2.7	514.06	0.25	806	0.8	0.21	675	-	-	-	-	C	C		9082414	17
2.4	581.44	0.25*	912	0.7	0.18	675	-	-	-	-	C	C		7082416	18
2.1	678.79	0.25*	1064	0.6	0.16	675	-	-	-	-	C	C		7082414	19

* Power higher than the maximum one which can be supported by the gearbox. Select according to the torque M_{2R}

Potenza superiore a quella massima sopportabile dal riduttore. Selezionare in base al momento torcente M_{2R}

-  Motor flanges available
Flange motore disponibili
-  B) Supplied with reduction bushing
Fornito con bussola di riduzione
-  B) Available on request without reduction bushing
Disponibile a richiesta senza bussola di riduzione
-  C) Motor flange holes position
Posizione fori flangia motore

Lubrication

Lubrificazione

Unit X74N is supplied with synthetic oil to assure long life lubrication.

Food grade oil is available on request.

See Table 1 for lubrication and recommended quantity.

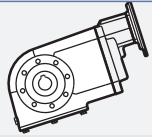
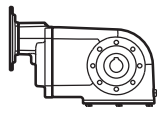
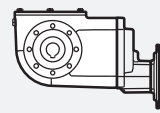
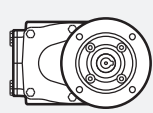
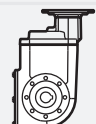
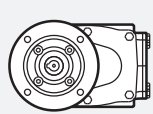
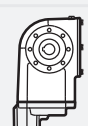
See Table 2 for possible radial and axial loads on the gearbox.

Il riduttore tipo X74N viene fornito con olio sintetico e lubrificazione tipo "long life".

Disponibile a richiesta olio alimentare.

Vedi Tabella 1 per oli e quantità consigliati.

Vedi Tabella 2 per i carichi radiali e assiali applicabili al riduttore.

Shell	Eni	V8	
Omala S4 WE 320	Telium VSF 320	On request ASK	
B3		B8	
Standard 2.60 L		On request 2.90 L	
B6		V5	
On request 2.80 L		On request 4.80 L	
B7		V6	
On request 2.10 L		On request 3.30 L	

For more details on lubrication and plugs check our website.

Per maggiori dettagli su lubrificazione e tappi olio vedi il nostro sito web.

Radial and axial loads

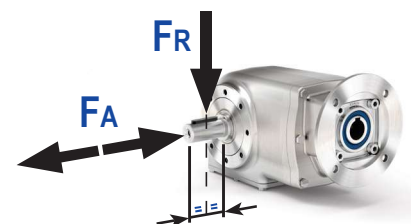
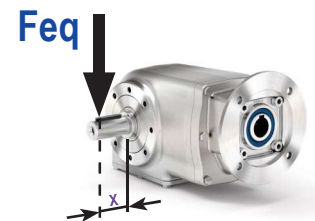
Carichi radiali e assiali

Output shaft

Albero di uscita

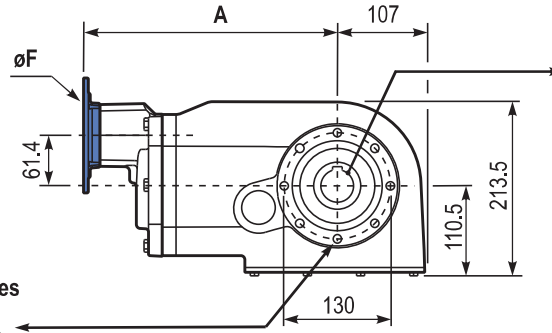
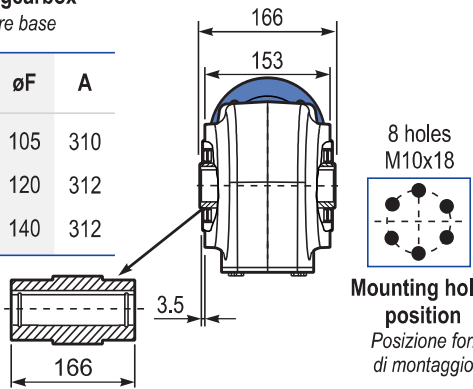
n_2 [min ⁻¹]	F_A [N]	F_R [N]
300	1360	6800
250	1400	7000
200	1440	7200
140	1480	7400
120	1520	7600
85	1560	7800
70	1720	8600
40	1840	9200
15	1920	9600

$$F_{eq} = F_R \cdot \frac{178.5}{X + 143.5}$$

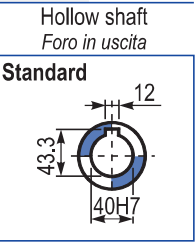


PX74NI...FB Basic gearbox
Riduttore base

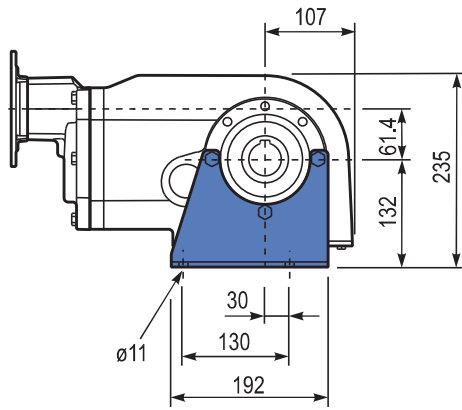
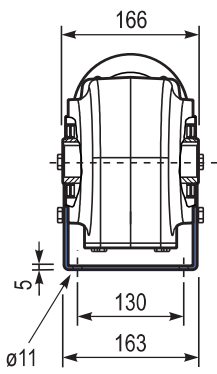
M. flanges	Kit code	øF	A
71B14	KI634047	105	310
80B14	KI634046	120	312
90B14	KI634041	140	312



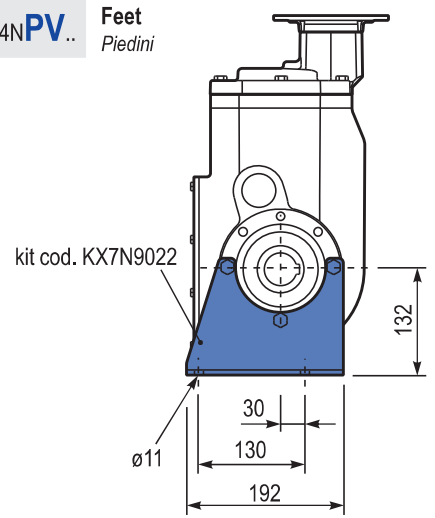
Gearbox weight peso riduttore **31.0 kg**



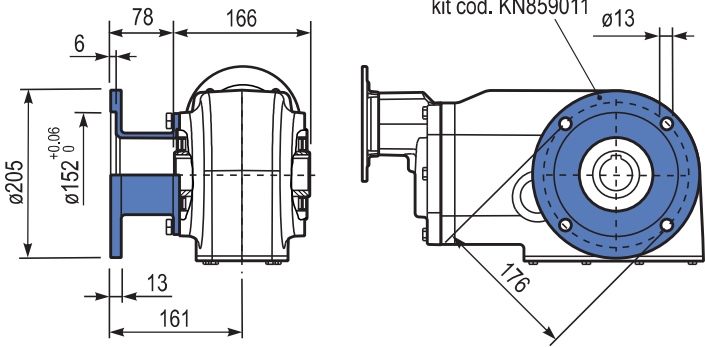
PX74NPA.. Feet
Piedini



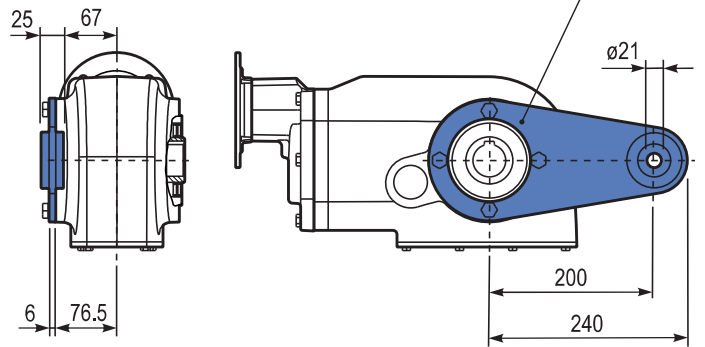
PX74NPV.. Feet
Piedini



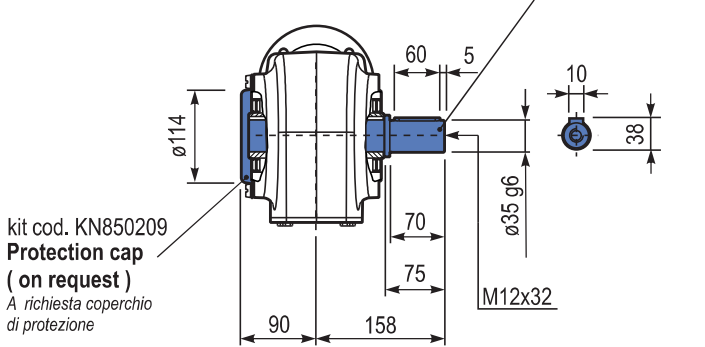
PX74NFL.. Output flange
Flangia uscita



PX74NBR.. Reaction Arm
Braccio di reazione



PX74NA.. Single output shaft
Albero semplice in uscita



kit cod. KN850209
Protection cap
(on request)
A richiesta coperchio di protezione

Suggested
Suggerito

Stainless steel protection cap
(on request).

Coperchio di protezione in acciaio inox a richiesta.

Kit cod. KN850209

