


The dynamic efficiency is **0.96** for all ratios

Input speed (n_1) = 1400 min⁻¹

Output speed n_2 [min ⁻¹]	Ratio i	Motor power P_{1M} [kW]	Output torque M_{2M} [Nm]	Service factor f_s	Nominal power P_{1R} [kW]	Nominal torque M_{2R} [Nm]	B5 motor flanges				B14 motor flanges			Output shaft 	Ratio code
							-	-	-	-	-R	-T	-U		
232	6.03	4	155	1.6	6.1	240								3011	01
151	9.26	4	238	1.1	4.5	270								308	02
123	11.36	4	291	1.2	4.7	350								2011	03
91	15.36	4	394	1.0	3.8	385								1611	04
80	17.46	4	448	0.9	3.5	400								208	05
70	19.97	3	386	1.1	3.1	410								1311	06
59	23.60	3	456	0.9	2.7	410								168	07
57	24.45	3	472	0.9	2.6	410								1111	08
45.6	30.69	2.2	436	0.9	2.0	410								138	09
39.6	35.35	1.5	346	1.2	1.8	410								811	10
37.3	37.57	1.5	368	1.1	1.7	410								118	11
28.8	48.68	1.1	348	1.0	1.1	365								611	12
25.8	54.33	1.1	389	1.1	1.2	410								88	13
18.7	74.81	0.75	367	1.0	0.73	360								68	14

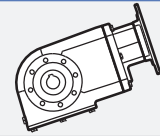
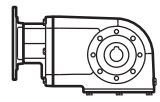
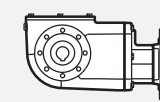
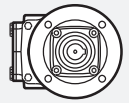
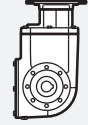
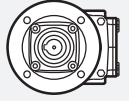
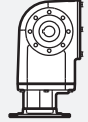
-  **Motor flanges available**
Flange motore disponibili
-  **B) Supplied with reduction bushing**
Fornito con bussola di riduzione
-  **B) Available on request without reduction bushing**
Disponibile a richiesta senza bussola di riduzione
-  **C) Motor flange holes position**
Posizione fori flangia motore

Lubrication

Lubrificazione

Unit X62N is supplied with synthetic oil to assure long life lubrication.
Food grade oil is available on request.
See Table 1 for lubrication and recommended quantity.
See Table 2 for possible radial and axial loads on the gearbox.

Il riduttore tipo X62N viene fornito con olio sintetico e lubrificazione tipo "long life".
Disponibile a richiesta olio alimentare.
Vedi Tabella 1 per oli e quantità consigliati.
Vedi Tabella 2 per i carichi radiali e assiali applicabili al riduttore.

Shell Omala S4 WE 320	Eni Telium VSF 320	V8 On request ASK	
B3 Standard 1.05 L		B8 On request 1.90 L	
B6 On request 1.85 L		V5 On request 3.20 L	
B7 On request 1.70 L		V6 On request 2.25 L	

For more details on lubrication and plugs check our website.
Per maggiori dettagli su lubrificazione e tappi olio vedi il nostro sito web.

Tab. 1

Radial and axial loads

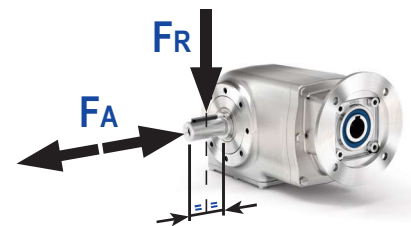
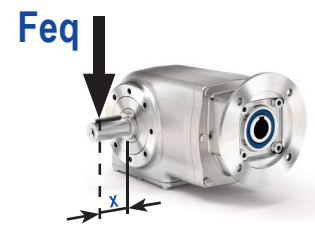
Carichi radiali e assiali

Output shaft

Albero di uscita

n_2 [min ⁻¹]	F_A [N]	F_R [N]
250	600	3000
150	700	3500
100	780	3900
75	890	4450
50	1140	5700
25	1330	6650
15	1660	8300

$$F_{eq} = F_R \cdot \frac{168}{X + 138}$$

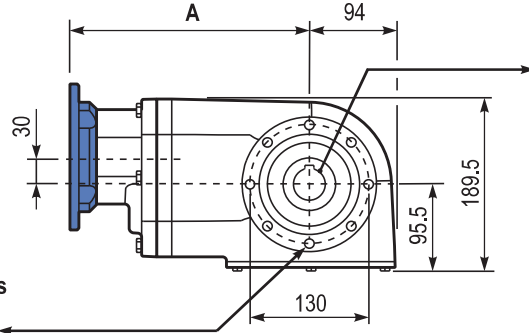
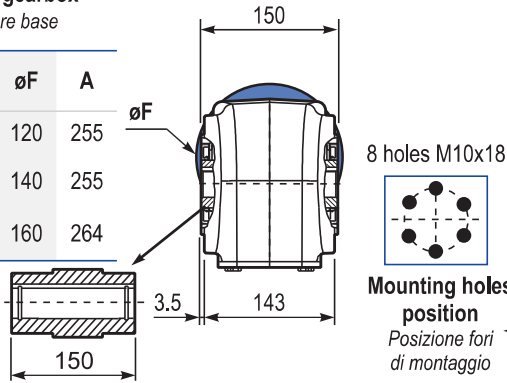


Tab. 2

PX62NI...FB

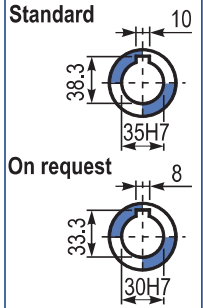
Basic gearbox
Riduttore base

M. flanges	Kit code	øF	A
80B14	KI854046	120	255
90B14	KI854045	140	255
100-112B14	KI854041	160	264



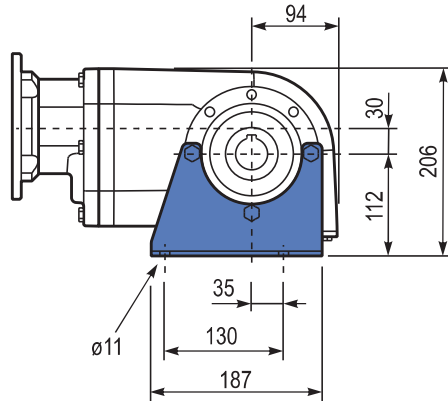
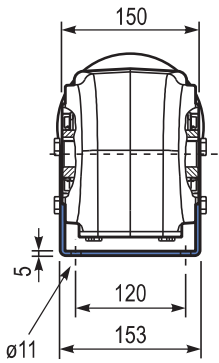
Gearbox weight
peso riduttore **23.2 kg**

Hollow shaft
Foro in uscita



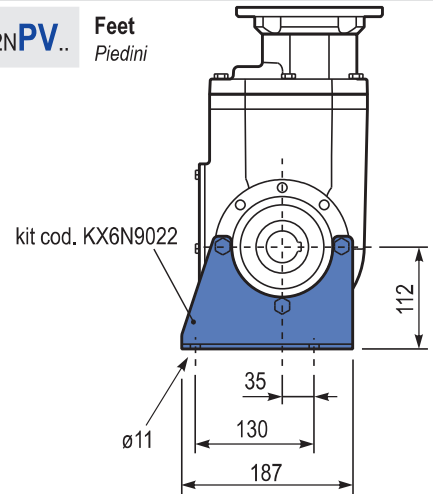
PX62NPA..

Feet
Piedini



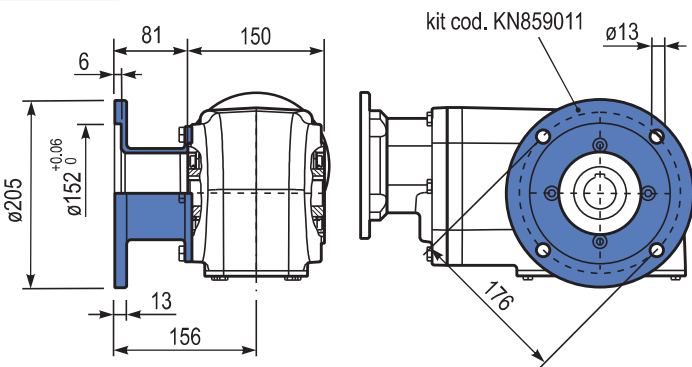
PX62NPV..

Feet
Piedini



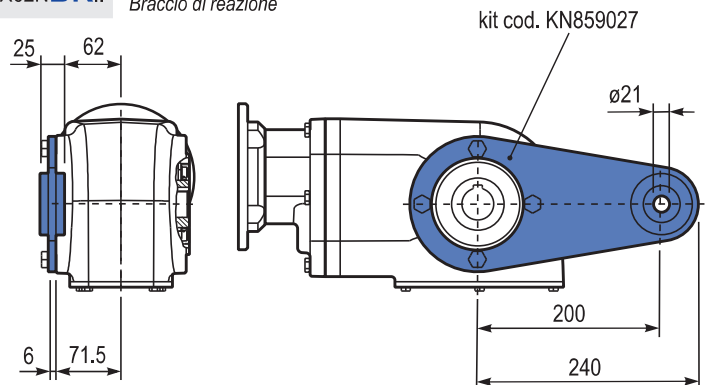
PX62NFL..

Output flange
Flangia uscita



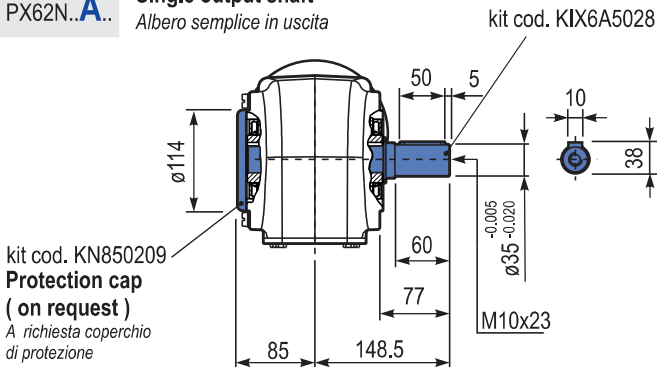
PX62NBR..

Reaction Arm
Braccio di reazione



PX62NA..

Single output shaft
Albero semplice in uscita



kit cod. KN850209
**Protection cap
(on request)**
A richiesta coperchio di protezione

Suggested

Suggerito

**Stainless steel protection cap
(on request).**

Coperchio di protezione in acciaio inox a richiesta.

Kit cod. KN850209

